



TA LIESY HOMES
NORTHWEST, LLC

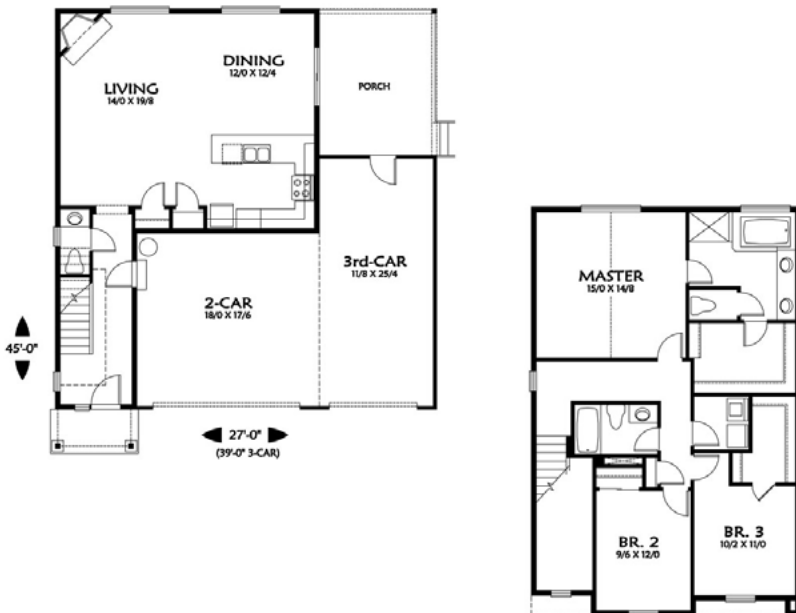
Exceptional Design. Impeccable Construction. Ageless Architecture.



The Klamath

3 or 4 Bedroom / 2 or 3 Car Garage

The Klamath plan is a roomy 1757 square feet, with options for 3 or 4 bedrooms and a 2 or 3 car garage. As a delightful addition, the main floor offers a sizable, covered patio just off the dining room. With a fireplace in the living room, a private master bath and so much closet space, it's the perfect choice for any lifestyle. Built by Pacific Northwest Builder, TA Liesy Homes Northwest, LLC. TA Liesy Homes Northwest.



MAIN FLOOR 1757 SQ. FT.

Standard Features:

- Granite Kitchen Counters
- Custom Alder Cabinets
- Designer High Grade Carpet
- Stainless Gas Appliances
- Fully Finished Garage

Available Upgrades:

- Air Conditioning
- Central Vacuum System
- Fencing
- Rear Yard Landscaping
- Washer / Dryer