



TA LIESY HOMES

NORTHWEST, LLC

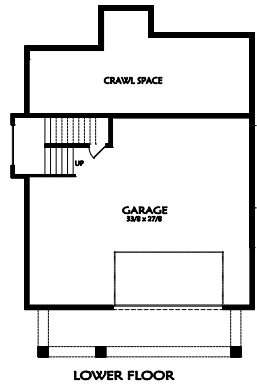
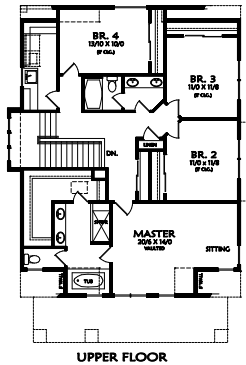
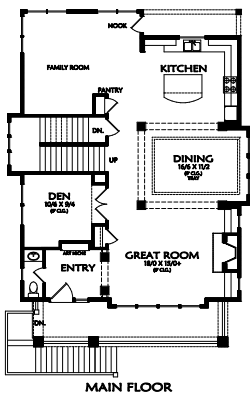
Exceptional Design. Impeccable Construction. Ageless Architecture.



The Whitman

4 Bedroom, 2.5 Bath / 2 Car Garage

This 4 bedroom, 2.5 bath home offers a generous living space of 2877 square feet. Family and dining rooms are conveniently placed just off the kitchen and the master suite includes a sitting room. Thoughtful details inside and out, like an art niche in the entryway and lovely exterior accents, make for a beautiful home by Pacific Northwest Builder, TA Liesy Homes Northwest, LLC.



2877 SQ. FT.

Standard Features:

- Granite Kitchen Counters
- Custom Alder Cabinets
- Designer High Grade Carpet
- Stainless Gas Appliances
- Fully Finished Garage

Available Upgrades:

- Air Conditioning
- Central Vacuum System
- Fencing
- Rear Yard Landscaping
- Washer / Dryer